



# Inclusion Service Who's Who

August 2018

[www.pembrokeshire.gov.uk/inclusion](http://www.pembrokeshire.gov.uk/inclusion)  
[www.sir-benfro.gov.uk/cynhwysiant](http://www.sir-benfro.gov.uk/cynhwysiant)

# WHO WE ARE

## SENIOR MANAGEMENT TEAM



**Nichola Jones**

Head of Inclusion & Disabilities

01437 775139 – nichola.jones@pembrokeshire.gov.uk



**Tracy Allison**

Group Manager for Integrated Services

01437 766141 – tracy.allison@pembrokeshire.gov.uk



**Terina Thomas**

Head of Pembrokeshire Learning Centre & Behaviour Support Outreach

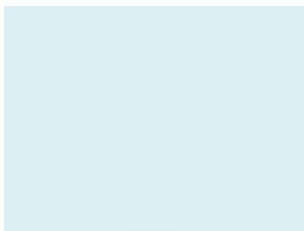
01646 602473 – terina.l.thomas@pembrokeshire.gov.uk



**Susan Evans**

Team Leader for Complex Needs

07979 616562 – susan.evans@pembrokeshire.gov.uk



**Dewi Hughes**

Acting Lead Educational Psychologist

01437 776042 – dewi.hughes@pembrokeshire.gov.uk



**Hayli Gibson**

Team Leader for Early Years

01437 776350 – hayli.gibson@pembrokeshire.gov.uk

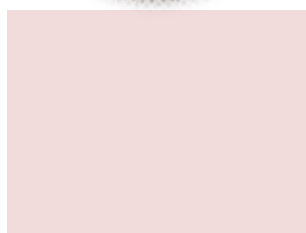
[www.pembrokeshire.gov.uk/inclusion](http://www.pembrokeshire.gov.uk/inclusion)  
[www.sir-benfro.gov.uk/cynhwysiant](http://www.sir-benfro.gov.uk/cynhwysiant)

**Specialist and Advisory Teachers for all aspects of the Inclusion Service can be contacted as follows:**

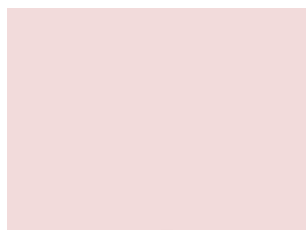
### Early Help for Communication & Specific Learning Difficulties



**Claire Bullock**  
Team Leader  
Autistic Spectrum Condition  
07867 461745 – [claire.bullock@pembrokeshire.gov.uk](mailto:claire.bullock@pembrokeshire.gov.uk)



**Philippa Large**  
Speech & Language Therapist  
07887 946293 [philippa.large@wales.nhs.uk](mailto:philippa.large@wales.nhs.uk)



**Mel Ferrier**  
Occupational Therapist  
Developmental Coordination Disorder  
01437 764551 – [melanie.ferrier@wales.nhs.uk](mailto:melanie.ferrier@wales.nhs.uk)



**Emma Wilson**  
Specialist Teacher  
Specific Learning Difficulties  
01437 764551 – [emma.wilson2@pembrokeshire.gov.uk](mailto:emma.wilson2@pembrokeshire.gov.uk)

### Outreach Support for Complex Learning Difficulties



**Alexis George**  
Assistant Headteacher  
Complex Learning Difficulties  
01437 762701 – [asstheadportfield2@pembrokeshire.gov.uk](mailto:asstheadportfield2@pembrokeshire.gov.uk)

### Business Support



**Kathy Powell**  
Business Support Manager  
01437 775139 – [kathryn.powell@pembrokeshire.gov.uk](mailto:kathryn.powell@pembrokeshire.gov.uk)

[www.pembrokeshire.gov.uk/inclusion](http://www.pembrokeshire.gov.uk/inclusion)  
[www.sir-benfro.gov.uk/cynhwysiant](http://www.sir-benfro.gov.uk/cynhwysiant)

## Sensory Impairment and Complex Medical



**Annette Thomas**

Team Leader

Sensory

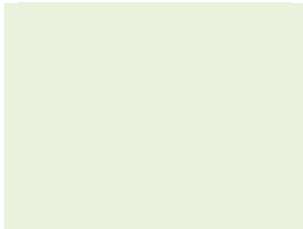
01437 770158 – [annette.thomas@pembrokeshire.gov.uk](mailto:annette.thomas@pembrokeshire.gov.uk)



**Catherine Scott**

Hearing Impairment

01437 770168 – [catherine.scott@pembrokeshire.gov.uk](mailto:catherine.scott@pembrokeshire.gov.uk)



**Mair Jones**

Visual Impairment

01437 770172 – [gill.jones@pembrokeshire.gov.uk](mailto:gill.jones@pembrokeshire.gov.uk)



**Carolyn Waters**

Physical Impairment, Medical Complex Needs

01437 770172 – [carolyn.waters@pembrokeshire.gov.uk](mailto:carolyn.waters@pembrokeshire.gov.uk)



**Susan Evans**

Team Leader for Complex Needs

01437 776009 – [susan.evans@pembrokeshire.gov.uk](mailto:susan.evans@pembrokeshire.gov.uk)

## Elective Home Education



**Carolyn Waters**

Elective Home Education

01437 770172 – [carolyn.waters@pembrokeshire.gov.uk](mailto:carolyn.waters@pembrokeshire.gov.uk)

[www.pembrokeshire.gov.uk/inclusion](http://www.pembrokeshire.gov.uk/inclusion)  
[www.sir-benfro.gov.uk/cynhwysiant](http://www.sir-benfro.gov.uk/cynhwysiant)

## Special Education Needs

### Donna Davies

Assistant ALN Officer

01437 775015 – [donna.davies@pembrokeshire.gov.uk](mailto:donna.davies@pembrokeshire.gov.uk)

## English as an Additional Language / Gypsy Travellers



### Annette Thomas

English as an Additional Language

01437 770158 – [annette.thomas@pembrokeshire.gov.uk](mailto:annette.thomas@pembrokeshire.gov.uk)

### Claire Arnold

Gypsy Traveller Education

01646 685685 – [Claire.arnold@pembrokeshire.gov.uk](mailto:Claire.arnold@pembrokeshire.gov.uk)

## Pembrokeshire Learning Centre



### Terina Thomas

Head of Pembrokeshire Learning Centre & Behaviour Support Service

01834 843152 – [terina.l.thomas@pembrokeshire.gov.uk](mailto:terina.l.thomas@pembrokeshire.gov.uk)



### Julie Jones

Specialist Support & Provision for Anxious & Phobic Pupils

07889 615716 – [julie.e.jones@pembrokeshire.gov.uk](mailto:julie.e.jones@pembrokeshire.gov.uk)

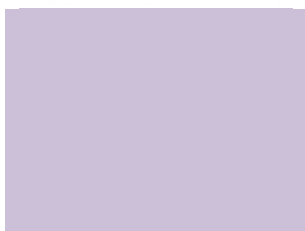
Neyland Centre – 01646 602473

[www.pembrokeshire.gov.uk/inclusion](http://www.pembrokeshire.gov.uk/inclusion)  
[www.sir-benfro.gov.uk/cynhwysiant](http://www.sir-benfro.gov.uk/cynhwysiant)

## Parent Partnership Support Services



**Leonie Rayner**  
Inclusion Support Team Co-ordinator  
01437 776350 – [leonie.rayne@pembrokeshire.gov.uk](mailto:leonie.rayne@pembrokeshire.gov.uk)



**Kelly John**  
Early Help Inclusion Coordinator  
01437 774658 – [kelly.john@pembrokeshire.gov.uk](mailto:kelly.john@pembrokeshire.gov.uk)

## School Counselling Services



**Lyn Herde**  
Personal Support Development Officer  
01437 776473 – [lyn.herde@pembrokeshire.gov.uk](mailto:lyn.herde@pembrokeshire.gov.uk)

## Children with Disabilities Team



**Victoria Saunders**  
Team Leader  
01437 774451 – [victoria.saunders@pembrokeshire.gov.uk](mailto:victoria.saunders@pembrokeshire.gov.uk)

[www.pembrokeshire.gov.uk/inclusion](http://www.pembrokeshire.gov.uk/inclusion)  
[www.sir-benfro.gov.uk/cynhwysiant](http://www.sir-benfro.gov.uk/cynhwysiant)